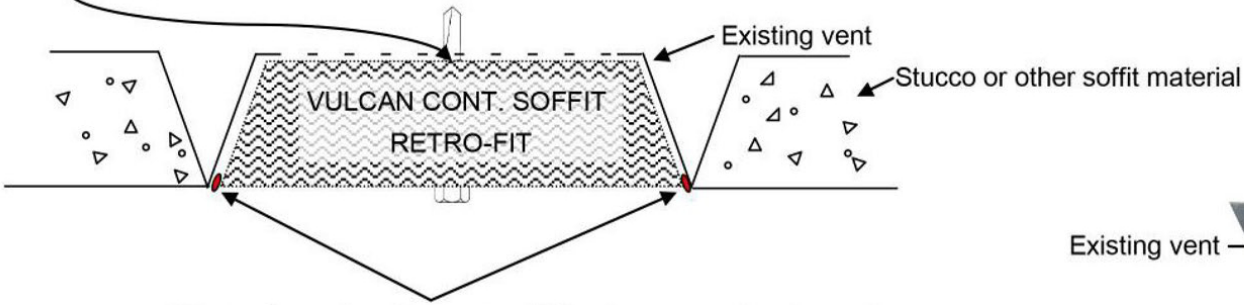
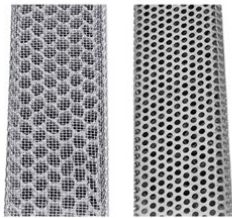


Continuous Retro-fit Soffit Vent Installation Notes

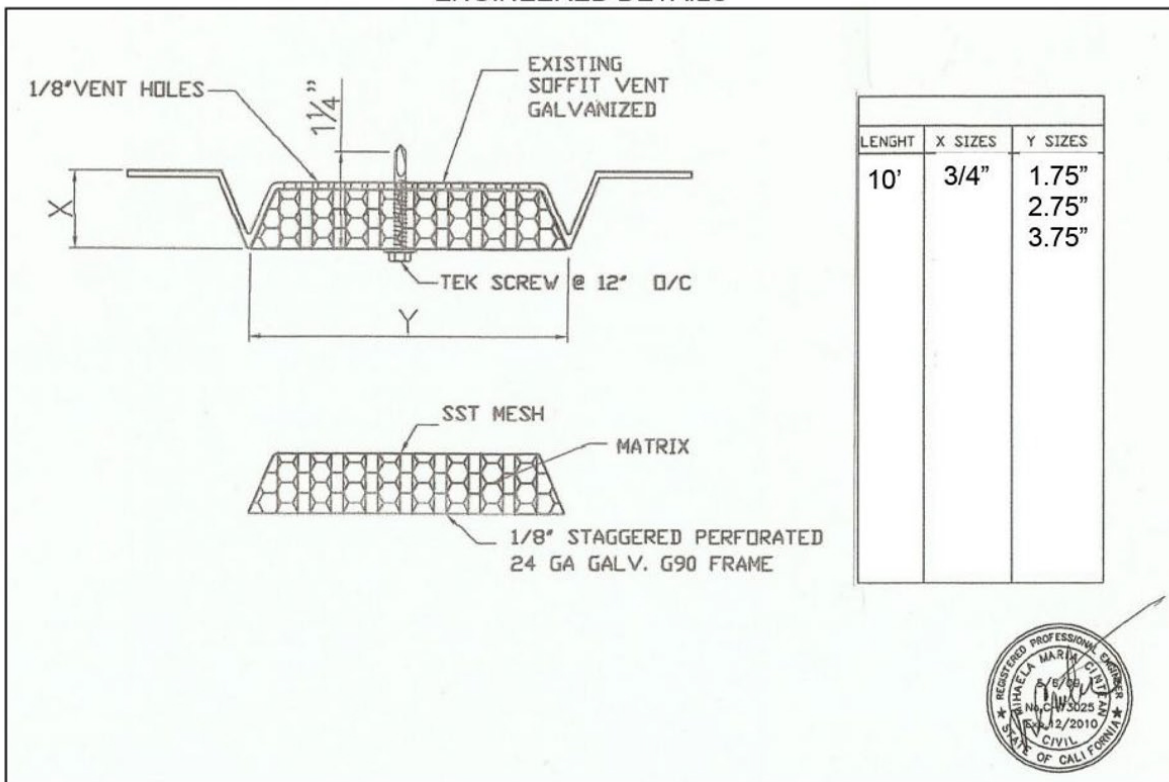
NOTE: Retro-fit product should cover existing vent perforations.



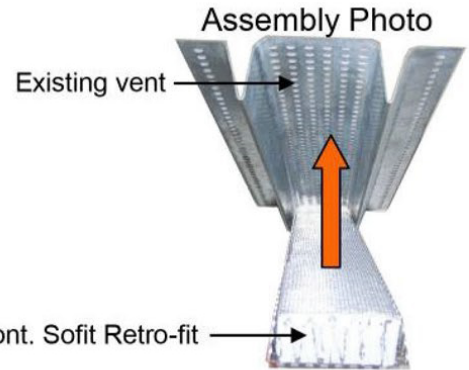
If Retro-fit product does not sufficiently cover perforations of existing soffit vent AND there are gaps on the sides between the old vent and the retro-fit product, apply a small bead of fire proof caulking on the right and left side, in the gaps.



ENGINEERED DETAILS



LENGTH	X SIZES	Y SIZES
10'	3/4"	1.75"
		2.75"
		3.75"



Assembled Photo Cross Section



Vulcan Continuous Soffit Retrofit	
DATE: 12/12/18	Retrofit
Model#: VSCXXXXRF	
Retrofit installation detail	